

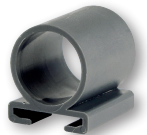
# e-xam

## Diagnostic penlight



Photobiologically validated high-performance pen-lights for medical diagnosis of throat and pupil. Available with LED or Xenon illumination.

- › Photobiologically validated for lighting of pupils according to EN 62471:2008
- › Pre-focused and even field of light
- › Bright and natural white light by high-performance LED
- › LED burns at least 20.000 hours
- › Low maintenance costs thanks to long LED and battery service lives
- › ABS casing with metal clip, disinfectable easy to use with on/off switch including blade holder, batteries and nylon case
- › Designed for durability, comes with a 2-year warranty including LED



### Technical data:

<b>e-xam LED 2.5 V</b>	5.000-5.500 Kelvin 180.000 Lux max. field of light: approx. 11 cm diameter (distance 15 cm)
<b>e-xam Xenon 2.5 V</b>	3.500-4.000 Kelvin 60.000 Lux max. field of light: approx. 14 cm diameter (distance 15 cm)
<b>Batteries:</b>	2 x Alkaline AA, 1,5 V
<b>No. 5130-01</b>	e-xam, XL 2.5 V, black, with tongue blade holder
<b>No. 5130-02</b>	e-xam, XL 2.5 V, white, with tongue blade holder
<b>No. 5131-01</b>	e-xam, LED 2.5 V, black, with tongue blade holder
<b>No. 5131-02</b>	e-xam, LED 2.5 V, white, with tongue blade holder

Please visit **riester.de** for more information

